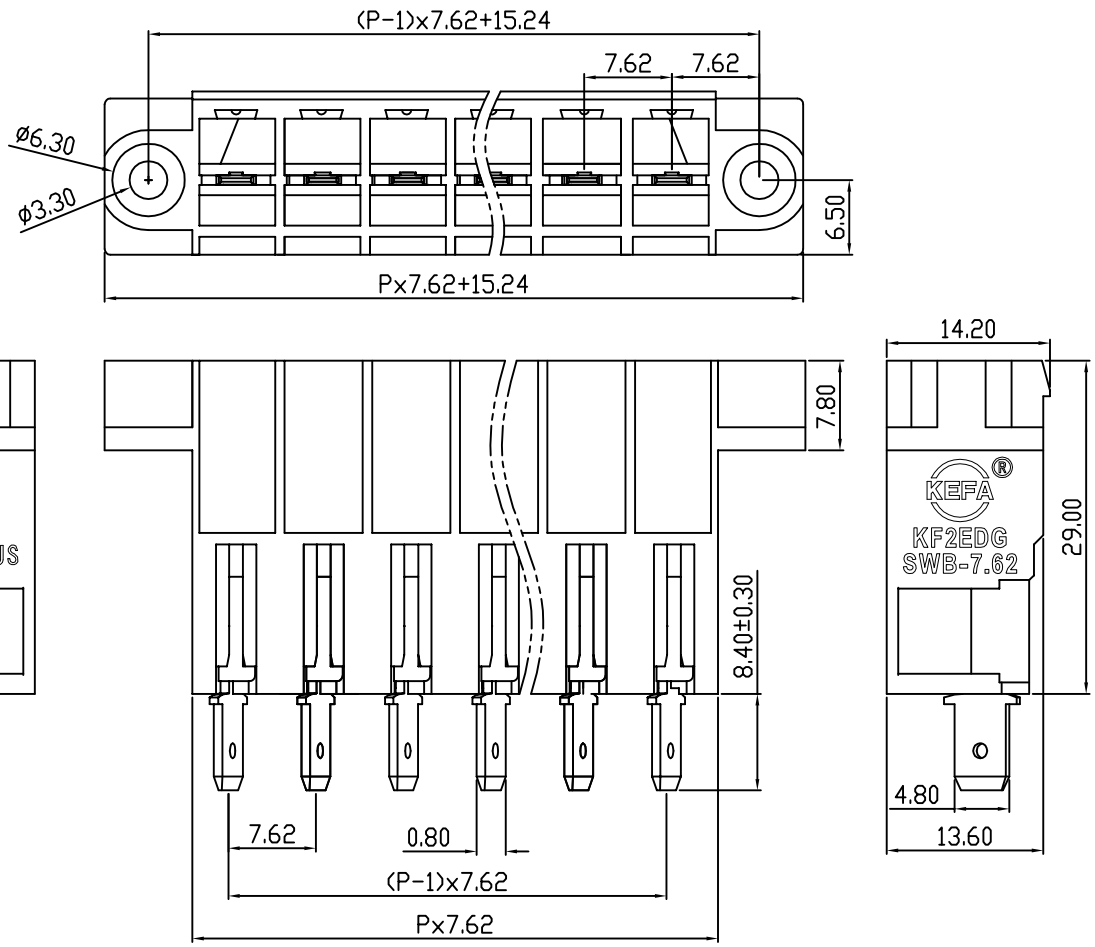


| linear dimension(Tolerances Standard GB/T 14486-2008) | | | | | | | | — ▯ ⊥ | | |
|---|-------|--------------|---------------|---------------|----------------|-----------------|-------------|-------|----------------|-------------|
| variable range | to | over 6 to 10 | over 10 to 30 | over 30 to 60 | over 60 to 100 | over 100 to 160 | over 160 to | to | over 10 to 100 | over 100 to |
| | 6 | 10 | 30 | 60 | 100 | 160 | | 10 | 100 | |
| tolerance | ±0.20 | ±0.30 | ±0.50 | ±0.70 | ±1.00 | ±1.30 | ±1.60 | 0.10 | 0.30 | 0.60 |

| REVISION RECORD | | | | |
|-----------------|-------------|---------|----------|----------|
| REV. | DESCRIPTION | ECN No. | APPROVED | DATE |
| A | 新发行 | | CLF | 21.03.15 |
| | | | | |
| | | | | |



| UL/CUL 技术参数 UL/CUL Technical Data | | | |
|--|--|------------------|----------|
| 等级 Use Group | | B | C D |
| 额定电压 Rated Voltage [V] | | 300 | - 300 |
| 额定电流 Rated Current [A] | | 41 | - 10 |
| 接线范围 Wire Range | | - | |
| 单/多芯线 Solid/Stranded [AWG] | | - | |
| 耐电压 Withstanding Voltage | | 1600V/1Min | |
| IEC 技术参数 IEC Technical Data | | | |
| 过电压类别 Overvoltage Category | | III | III II |
| 污染等级 Contamination Class | | 3 | 2 2 |
| 额定电压 Rated Voltage [V] | | 400 | 630 1000 |
| 额定电流 Rated Current [A] | | 41 | 41 41 |
| 额定冲击电压 Impulse withstand voltage ^a [KV] | | 6.0 | 6.0 6.0 |
| 导线截面积 Conductor cross section | | - | |
| 硬质/柔性导线 Solid/flexible [mm ²] | | - | |
| 材料 Material | | | |
| 绝缘材料 Insulation Material | | PA66 | |
| 阻燃等级 Inflammability | | UL94V-0 | |
| 导体材料 Contactor Material | | 铜合金 Copper alloy | |
| 导体表面镀层 Contactive Coating | | 镀锡 Tin Plated | |
| 一般参数 Other Data | | | |
| 间距 Pitch [mm] | | 7.62 | |
| 极数 Poles [P] | | 2-16 | |
| 剥线长度 Stripping Length [mm] | | - | |
| 螺丝 Screw/扭矩 Torque(Max) [N.m] | | - | |
| 工作温度 Operating temperatur [°C] | | -40~+105 | |
| 引针尺寸 Pin Dimensions [mm] | | 8.4 | |
| PCB板孔径 PCB Hole Diameter [mm] | | - | |

| | | | |
|------|-----|------|----------|
| DES. | FZM | DATE | 21.03.15 |
| CHK. | SY | DATE | 21.03.15 |
| APP. | CLF | DATE | 21.03.15 |

单位/UNITS mm 尺寸/SIZE A4 比例/SCALE 1:1
KEFA[®] 慈溪市科发电子有限公司
 CIXI KEFA ELECTRONIC CO., LTD

| 第三视角/THIRD ANGLE PROJECTION | | 版本/REV | A |
|-----------------------------|----------------|--------|---|
| | | | |
| 名称/TITLE | KF2EDGSWB-7.62 | | |