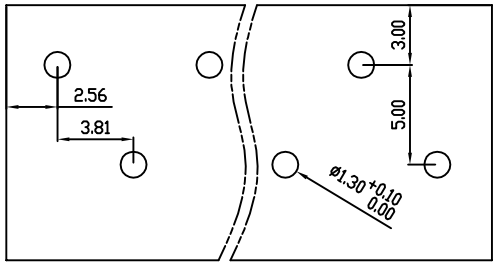


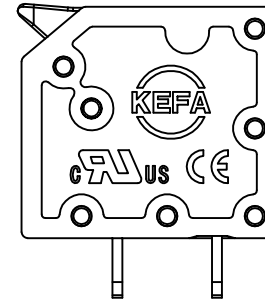
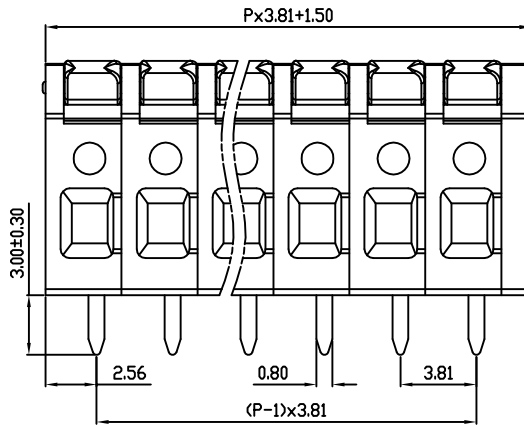
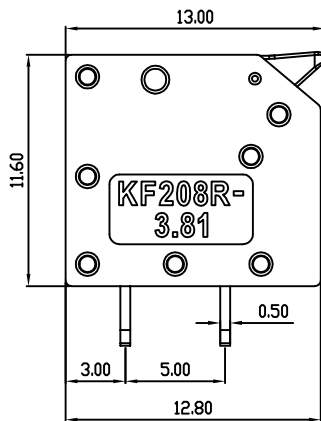
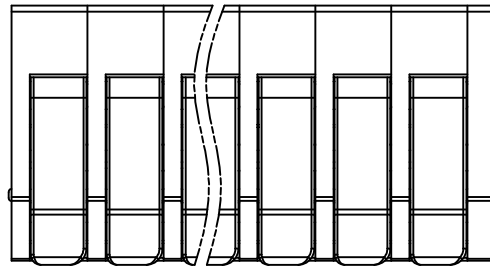
linear dimension(Tolerances Standard GB/T 14486-2008)



variable range	to	over 6 to 10	over 10 to 30	over 30 to 60	over 60 to 100	over 100 to 160	over 160 to	to	over 10 to 100	over 100 to
	6	10	30	60	100	160	to	10	100	to
tolerance	±0.20	±0.30	±0.50	±0.70	±1.00	±1.30	±1.60	0.10	0.30	0.60



PCB Layout



REVISION RECORD

REV.	DESCRIPTION	ECN No.	APPROVED	DATE
A	新发行		CLF	24.03.20

UL/CUL 技术参数 UL/CUL Technical Data			
等级	Use Group	B	C D
额定电压	Rated Voltage [V]	300	- 300
额定电流	Rated Current [A]	10	- 10
接线范围	Wire Range	24-16	
单/多芯线	Solid/Stranded [AWG]	24-16	
耐电压	Withstanding Voltage	AC1600V/1Min	
IEC 技术参数 IEC Technical Data			
过电压类别	Overvoltage Category	III	III II
污染等级	Contamination Class	3	2 2
额定电压	Rated Voltage [V]	200	320 500
额定电流	Rated Current [A]	10	10 10
额定冲击电压	Impulse withstand voltagea [KV]	2.5	2.5 2.5
导线截面积	Conductor cross section	1.5	
硬质/柔性导线	Solid/flexible [mm ²]	1.5	
材料 Material			
绝缘材料	Insulation Material	PA66	
阻燃等级	Inflammability	UL94V-0	
导体材料	Contact Material	铜合金 Copper alloy	
导体表面镀层	Contactive Coating	镀锡 Tin Plated	
一般参数 Other Data			
间距	Pitch [mm]	3.81	
极数	Poles [P]	01-XX	
剥线长度	Stripping Length [mm]	9	
螺丝 Screw/扭矩 Torque(Max)	[N.m]	-	
工作温度	Operating temperatur [°C]	-40~+105	
引脚尺寸	Pin Dimensions [mm]	3.0	
PCB板孔径	PCB Hole Diameter [mm]	1.30	

DES.	SJD	DATE	24.03.20
CHK.	BY	DATE	24.03.20
APP.	CLF	DATE	24.03.20

单位 / UNITS	mm	尺寸 / SIZE	A4	比例 / SCALE	1:1
慈溪市科发电子有限公司 CIXI KEFA ELECTRONIC CO., LTD					

第三视角 / THIRD ANGLE PROJECTION	版本 / REV	A
名称 / TITLE	KF208RA-3.81	